



5TH CATEGORY - HISTORIC RACING

**GROUP Sc**

APPROVED VEHICLE SPECIFICATION

This form details the approved specifications of individual vehicle models in the 5th Category Historic car group. To be issued with an Historic Log Book, cars need to comply with these specifications, the physical appearance shown in the illustrations and the general historic rules as detailed in the current CAMS Manual of Motor Sport.

**Make of Car:** Alfa Romeo

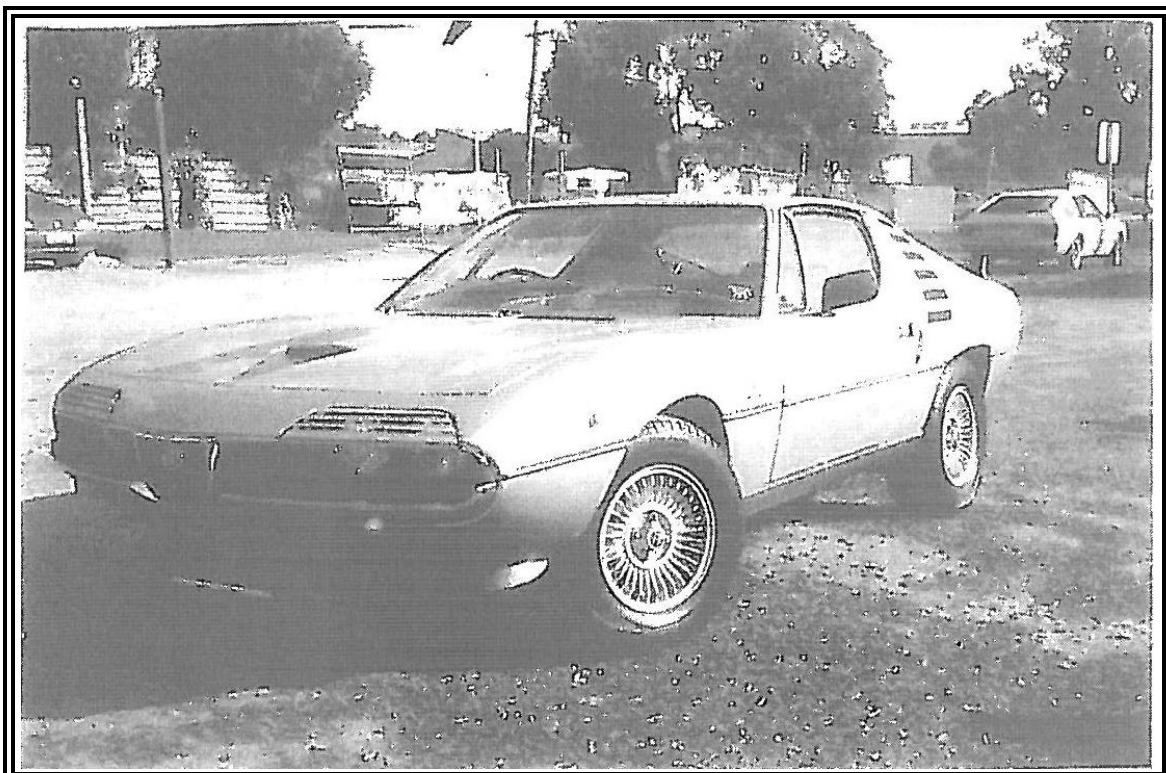
**Model:** Montreal – Tipo 10565

**Period of Original Manufacture:** May 1971 - 1976

**CAMS Historic Group:** Sc

**Date of Issue of this Document:** 4<sup>th</sup> October 2002

**Last Update:** 5 August 2011



This form was issued without alteration or erasure.

## SECTION 1 - CHASSIS

### 1.1 CHASSIS FRAME

**Description:** Unitary Construction **Period of Manufacture:** 5/1971 - 1976  
**Manufacturer:** .Alfa Romeo  
**Chassis no. from:** A.R.1425101 --  
**Chassis no. location:** Firewall  
**Material:** Steel  
**Comments:**

### 1.2 FRONT SUSPENSION

**Description:** Independent – Upper & Lower Wishbones  
**Spring medium:** Coil  
**Damper Type:** Telescopic **Adjustable:** Optional  
**Anti-sway bar:** Fitted **Adjustable:** Optional  
**Suspension adjustable:** Yes **Method:** Shims  
**Comments:** Spring rates & Ride Height free

### 1.3 REAR SUSPENSION

**Description:** Live Axle – Upper & Lower Trailing Arms  
**Spring medium:** Coil  
**Damper type:** Telescopic **Adjustable:** Optional  
**Anti-sway bar:** Fitted **Adjustable:** Optional  
**Suspension adjustable:** No **Method:**  
**Comments:** Spring rates & Ride Height free

### 1.4 STEERING

**Type:** Recirculating Ball **Make:** Alfa Romeo  
**Comments:**

### 1.5 BRAKES

	Front	Rear
<b>Type:</b>	Disc	Disc
<b>Dimensions:</b>	272 x 22mm	284 x 20mm
<b>Material of drum/disc</b>	Cast Iron	Cast Iron
<b>No. cylinders/pots per wheel:</b>	2	2
<b>Actuation:</b>	Hydraulic	Hydraulic
<b>Caliper: Make, Material, Type:</b>	ATE	ATE
<b>Master cylinder make:</b>	ATE	<b>Type:</b> Tandem

**Adjustable bias:** No

**Servo Fitted:** Yes  
**Comments:** Twin Master Cylinders permitted

## SECTION 2 - ENGINE

### 2.1 ENGINE

**Make:** Alfa Romeo  
**Model:** 105.65  
**No. cylinders:** 8  
**Cylinder Block-material:** Aluminium Alloy  
**Bore - Original:** 80mm  
**Stroke - original:** 64.5mm  
**Capacity - original:** 2593cc  
**Cooling method:** Water  
**Identifying marks:** 105.65  
**Comments:**

**Configuration:** Vee  
**Two/Four Stroke:** 4 Stroke  
**Max. allowed:** 81.5mm  
**Max. allowed:** 64.5mm  
**Max. allowed:** 2690cc

### 2.2 CYLINDER HEAD

**Make:**  
**No. of valves/cylinder-**  
**No. of ports total:** 16  
**No. of camshafts:** 4  
**Valve actuation:**  
**Spark plugs/cylinder:** 1  
**Identifying marks:**  
**Comments:**

**Inlet:** 1  
**Inlet:** 8  
**Location:** Heads  
Buckets

**Exhaust:** 1  
**Exhaust:** 8  
**Drive:** Chain

### 2.3 LUBRICATION

**Method:** Dry Sump  
**Dry sump pump type:**  
**Oil cooler standard:** Yes  
**Comments:**

**Oil tank location:** Engine Bay  
**Location:** Engine Bay  
**Location:** Front

### 2.4 IGNITION SYSTEM

**Type:** Electronic  
**Make:** Capacitor Discharge  
**Comments:**

### 2.5 FUEL SYSTEM

**Carburettor: Make:**  
**Fuel injection Make:** Spica  
**Supercharged:**  
**Comments:**

**Model:**  
**Type:** Mechanical  
**Type:**

## SECTION 3 - TRANSMISSION

### 3.1 CLUTCH

**Make:** Various                      **Type:** Dry Plate                      **Diameter:** 228mm  
**No. of Plates:** 1  
**Actuation:** Hydraulic  
**Comments:** Clutch and method of actuation free.

### 3.2 TRANSMISSION

**Type:** 5 Speed Synchromesh  
**Make:** ZF  
**No. forward speeds:** 5                      **Gearbox location:** Behind Engine  
**Gearchange type and location:** Floor- Remote  
**Case material:** Aluminium                      **Identifying marks:**  
**Comments:** Gear Ratios free

### 3.3 FINAL DRIVE

**Make:** Alfa Romeo                      **Model:** 105  
**Wheel drive method:** Rear  
**Ratios:** Various  
**Differential:** Spin Resistant                      **Type:** Hypoid  
**Comments:**

### 3.4 TRANSMISSION SHAFTS (EXPOSED)

**Number:** 1                      **Location:** Gearbox to Final Drive  
**Description:** Tailshaft with Universal Joints  
**Comments:**

### 3.5 WHEELS & TYRES

<b>Wheel type - Original:</b>	Campagnolo ALA Romeo	<b>Material, Original:</b> Magnesium alloy
<b>Allowed:</b>	Period Alloy	<b>Allowed:</b> Alloy
<b>Fixture method:</b>	<b>FRONT</b>	<b>No. studs:</b> <b>REAR</b>
<b>Wheel dia. &amp; rim width - Original:</b>	6.5 x 14	6.5 x 14
<b>Allowed :</b>	<b><u>7 x 15</u></b>	<b><u>7 x 15</u></b>
<b>Tyre Section - Original:</b>	195/70	195/70
<b>Allowed :</b>	215/60	215/60
	<b><u>225/60</u></b>	<b><u>225/60</u></b>
<b>Aspect ratio - minimum:</b>	60%	60%
<b>Comments:</b>		

## SECTION 4 - GENERAL

### 4.1 FUEL SYSTEM

**Tank Location:** Rear **Capacity:** 63 Litres  
**Fuel pump, type and location:** Electric x 2 **Make:**  
**Comments:** Fuel pump/s free

### 4.2 ELECTRICAL SYSTEM

**Voltage:** 12 **Generator/Alternator fitted:**  
**Battery Location:** Boot Alternator  
**Comments:**

### 4.3 BODYWORK

**Type:** Fixed Head Coupe **Material:** Steel  
**No. of seats:** 2 + 2 **No. doors:** 2  
**Comments:**

### 4.4 DIMENSIONS

**Track - Front:** 1372mm **Rear:** 1340mm  
**Wheelbase:** 2350mm **Overall length:** 4220mm  
**Dry weight:** 1220kg  
**Comments:**

**4.5 SAFETY EQUIPMENT :** *Refer applicable Group Regulations*