

# CAMS

5TH CATEGORY - HISTORIC RACING

**GROUP Sc**

APPROVED VEHICLE SPECIFICATION

This form details the approved specifications of individual vehicle models in the 5th Category Historic car group. To be issued with an Historic Log Book, cars need to comply with these specifications, the physical appearance shown in the illustrations and the general historic rules as detailed in the current CAMS Manual of Motor Sport.

**Make of Car:** Alfa Romeo

**Model:** Alfetta GTV 2000 T116

**Period of Original Manufacture:**

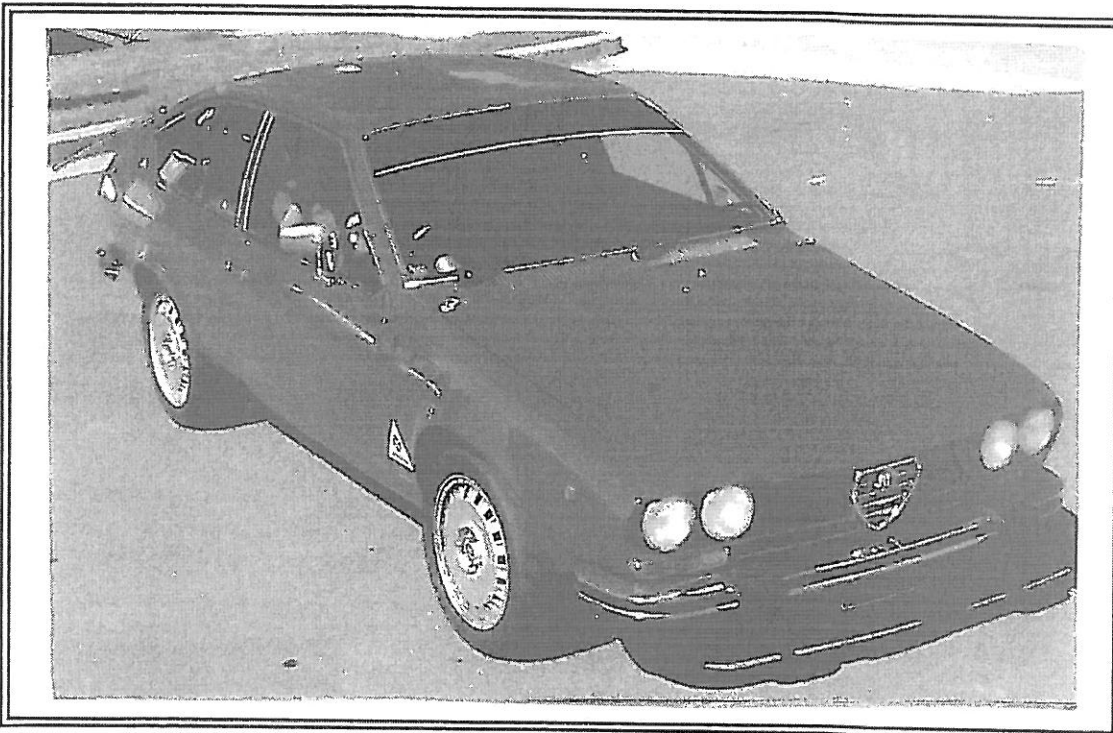
3/1977 – 6/1981

**CAMS Historic Group:**

Sc

**Date of Issue of this Document:**

18<sup>th</sup> July 2003



## SECTION 1 - CHASSIS

### 1.1 CHASSIS FRAME

<b>Description:</b>	Unitary Construction	<b>Period of Manufacture:</b> 3/1977 – 6/1981
<b>Manufacturer:</b>	Alfa Romeo	
<b>Chassis no. from:</b>	Code No. 116.370	
<b>Chassis no. location:</b>	Bulkhead	
<b>Material:</b>	Steel	
<b>Comments:</b>	Upgraded model from 7/1981 not eligible in this Group.	

### 1.2 FRONT SUSPENSION

<b>Description:</b>	Independent - Upper and Lower Wishbones	
<b>Spring medium:</b>	Torsion Bar	
<b>Damper Type:</b>	Telescopic	<b>Adjustable:</b> Optional
<b>Anti-sway bar:</b>	Fitted	<b>Adjustable:</b>
<b>Suspension adjustable:</b>	Yes	<b>Method:</b> Torsion Bar Tension
<b>Comments:</b>		

### 1.3 REAR SUSPENSION

<b>Description:</b>	Semi-independent - De Dion Tube - Watts Link	
<b>Spring medium:</b>	Coil	
<b>Damper type:</b>	Telescopic	<b>Adjustable:</b> Optional
<b>Anti-sway bar:</b>	Fitted	<b>Adjustable:</b> Optional
<b>Suspension adjustable:</b>	No	<b>Method:</b> Camber & Toe-in
<b>Comments:</b>		

### 1.4 STEERING

<b>Type:</b>	Rack & Pinion	<b>Make:</b> Alfa Romeo
<b>Comments:</b>		

### 1.5 BRAKES

	<b>Front</b>	<b>Rear</b>	
<b>Type:</b>	Disc	Disc	
<b>Dimensions:</b>	260 x 13 cm	250 x 10	
<b>Material of drum/disc</b>	Cast Iron	Cast Iron	
<b>No. cylinders/pots per wheel:</b>	2	2	
<b>Actuation:</b>	Hydraulic	Hydraulic	
<b>Caliper: Make, Material, Type:</b>	Ate - Alloy		
<b>Master cylinder make:</b>	Ate		<b>Type:</b> Optional
<b>Adjustable bias</b>	Yes		
<b>Servo Fitted:</b>	Yes		
<b>Comments:</b>			

## SECTION 2 - ENGINE

### 2.1 ENGINE

Make: Alfa Romeo  
Model:  
No. cylinders: 4 Configuration: In Line  
Cylinder Block-material: Alloy Four Stroke  
Bore - Original: 84mm Max. allowed: 85.5  
Stroke - original: 88.5mm Max. allowed: 88.5  
Capacity - original: 1962 cc Max. allowed: 2031 cc  
Cooling method: Water  
Identifying marks: ARO 1623  
COMMENTS:

### 2.2 CYLINDER HEAD

Make: Alfa Romeo  
No. of valves/cylinder- Inlet: 1 Exhaust: 1  
No. of ports total: 8 Inlet: 4 Exhaust: 4  
No. of camshafts: 2 Location: Head Drive: Chain  
Valve actuation: 2  
Spark plugs/cylinder: Direct  
Identifying marks: 1  
COMMENTS:

### 2.3 LUBRICATION

Method: Wet Sump Oil tank location: N/A  
Dry sump pump type: N/A Location: N/A  
Oil cooler standard: No Location: N/A  
COMMENTS: Oil Cooler optional

### 2.4 IGNITION SYSTEM

Type: Coil & Distributor  
Make: Marelli  
COMMENTS:

### 2.5 FUEL SYSTEM

Carburettor: Make: Dellorto or Model : DHLA40G  
Solex or Model: C40ADDHE  
Weber Model: DCOE40  
Fuel injection Make: N/A Type:  
Supercharged: N/A Type:  
COMMENTS: Carburettor bore size is free.

## SECTION 3 - TRANSMISSION

### 3.1 CLUTCH

Make: Alfa Romeo      **Type:** Diaphragm      **Diameter:** Not Specified  
No. of Plates: 1  
Actuation: Hydraulic  
Comments:

### 3.2 TRANSMISSION

**Type:** Transaxle  
Make: Alfa Romeo      **Model:**  
No. forward speeds: 5      **Gearbox location:** 1  
**Gearchange type and location:** Central Remote Shift  
**Case material:** Alloy      **Identifying marks:**  
Comments:

### 3.3 FINAL DRIVE

Make: Alfa Romeo      **Model:**  
**Wheel drive method:** Rear  
**Ratios:** Various  
**Differential:** Free      **Type:**  
Comments: Limited Slip Differential Allowed

### 3.4 TRANSMISSION SHAFTS (EXPOSED)

**Number:** 3      **Location:** Engine to Transaxle. Transaxle to rear wheels  
**Description:** Individual Driveshaft with Universal Joints  
**Comments:** Tubular Tailshaft with Universal Joints

### 3.5 WHEELS & TYRES

<b>Wheel type:</b> Original:		<b>Material: Original:</b> Steel or Alloy
Allowed:		<b>Allowed:</b> Steel or Alloy
<b>Fixture method:</b> Bolt on		<b>No. studs:</b> 4
	<b>FRONT</b>	<b>REAR</b>
<b>Wheel dia. &amp; rim width</b>		
<b>Original:</b>	5.5 x 14	5.5 x 14
<b>Allowed:</b>	6 x 14	6 x 14
<b>Tyre section:</b>		
<b>Original:</b>	185/70	185/70
<b>Allowed:</b>	205/60	205/60
<b>Aspect ratio - minimum:</b>	60%	60%
<b>Comments:</b>		

## SECTION 4 - GENERAL

### 4.1 FUEL SYSTEM

Tank Location: Rear  
Fuel pump, type and location: Mechanical  
Capacity: 57 Litres (approx)  
Make: Alfa Romeo  
Comments:

### 4.2 ELECTRICAL SYSTEM

Voltage: 12  
Battery Location: Engine Bay  
Alternator fitted: Yes  
Comments:

### 4.3 BODYWORK

Type: Fixed Head Liftback  
No. of seats: 4  
Material: Steel  
No. doors: 2  
Comments:

### 4.4 DIMENSIONS

Track - Front: 1360mm  
Wheelbase: 2400mm  
Dry weight: 1100kg  
Rear: 1358mm  
Overall length: 4210mm  
Comments:

### 4.5 SAFETY EQUIPMENT

Fire extinguisher required  
Seat belt required  
Rollbar optional/required  
Electrical cut off switch required  
Safety fuel tank optional/required  
Type fitted and location:  
Type and make fitted:

RP:mr-ALFA ALFETTA GTV2.doc